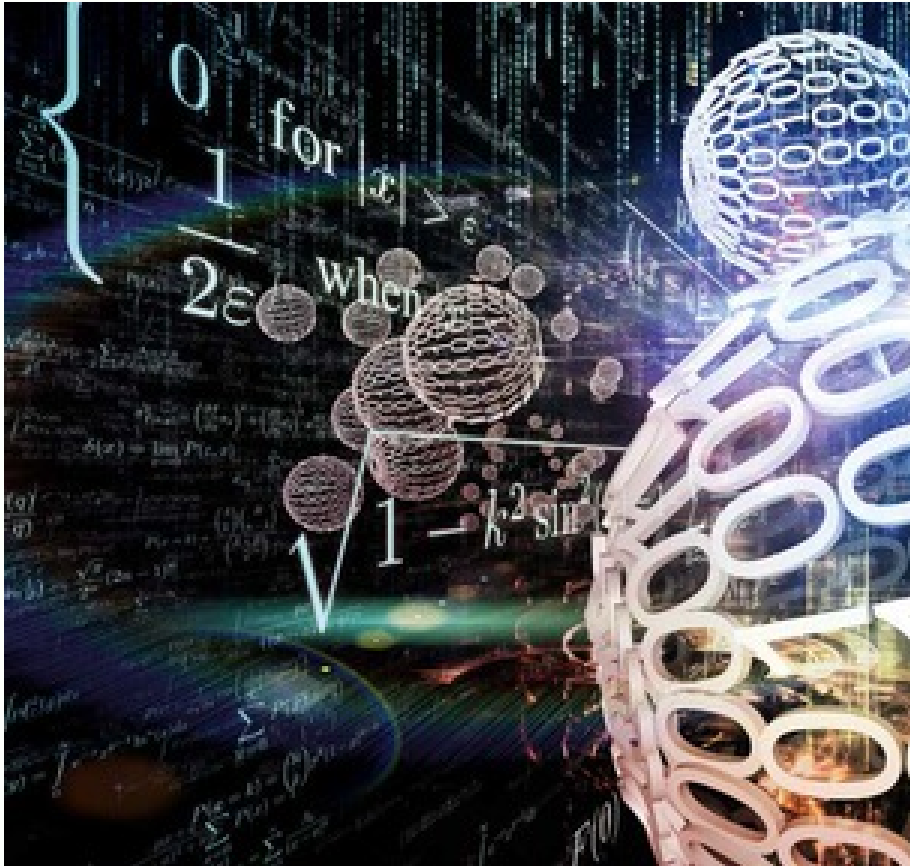


SYNOPSIS



Seismological Research

Erdbebenforschung

Japan lies in one of the most seismically active areas of the world. Get insight into the country's art of quakeproof Engineering.

Year: 2018

Run-Time: 1 x 22 min.

Directed by Judith Brandner

Produced by ORF

Available worldwide

Languages: German (ORIGINAL)

Format: 16:9

HD

» [SCREEN ONLINE](#)